

## Premium Septa

**Premium Septa** - are preconditioned and packed in glass jars. Premium Septa generally have much lower bleed than general purpose septa.



Marathon with CenterGuide

### CenterGuide™ Septa for Improved Performance

- Center point guides the needle for easy penetration
- Reduce needle bending
- Precision molding assures accurate fit
- Available in selected sizes of our premium septa

Precision-molded septa have a recess on the injection side, to guide the syringe needle to the same point with every injection. The CenterGuide design requires less force for initial penetration, for a smoother feel. Septum life may be enhanced in some applications by minimizing tearing and coring.

Septum	High Temperature	Long Life	Low Bleed	Suggested Applications
Marathon™	✓	✓	•	Autosampler use; extremely long lifetime, trace analysis
BTO®	✓	•	✓	High injection port temperature, lowest bleed, trace analysis
Advanced Green 3™	✓	•	•	General purpose use; low sticking

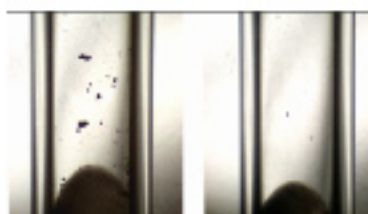
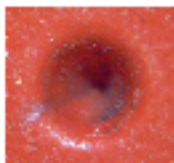
#### Upper Temperature Limit

Septa BTO, Marathon and Advanced Green 3 can be used at 400°C and higher injector set point temperatures in most instruments. Slight sticking may occur in new injection ports when holding septa above 300°C over periods of many days.

Septum Without CenterGuide™



Septum With CenterGuide™



CenterGuide can help reduce coring when used with tapered (rounded-tip) needles.

## Septa Cross Reference

Instrument	Septum Size
<b>KONIK</b>	
4000B, 5000A, 5000B	9.5 mm
<b>Agilent / HP</b>	
5880A, 5890, 6890, 6850	11 mm
5700, 5880	9.5 mm
On-column injection	5 mm
Purged packed column	11 mm
<b>Fisons / Carlo Erba</b>	
8000 Series	17 mm
<b>PerkinElmer</b>	
Sigma Series, 8000 Series, Clarus	11 mm
AutoSystem / AutoSystem XL	11 mm
<b>Shimadzu</b>	
All	Plug
<b>Thermo Instruments</b>	
Trace, Focus Split / Splitless	17 mm
9001, GCQ	9.5 mm
PTV Injector	12.7 mm
<b>Varian</b>	
1177 Injector	9 mm
1040 / 41 / 60 / 61	9.5 mm
1075 / 77 / 78 / 79, 1093 / 94 SPI	11.5 mm

## Premium Septa

### Septa BTO®

- Extended temperature range, low-bleed
- Maximum temperature 400OC
- Virtually eliminates injection-port sticking
- Pre-conditioned; packaged in glass to prevent contamination
- Each batch GC-FID tested
- Ideal for use with low-bleed, “Mass Spec” capillary columns

Septa BTO is Bleed and Temperature Optimized for today’s most demanding GC and GC/MS applications. Septa BTO is formulated to extend low-bleed and outstanding mechanical properties of premium GC septa to the highest-temperature applications. It retains remarkable softness and pierceability at high temperatures, with extremely low bleed. Septa are 3 mm thick, and are packaged in glass vials.



AUC298717



AUC298717

Description	Qty	Item No.
5 mm BTO CenterGuide™	50/pk	AUC298787
1/4" (6.4 mm) BTO	50/pk	AUC298755
9 mm BTO CenterGuide	50/pk	AUC298713
3/8" (9.5 mm) BTO	50/pk	AUC298705
10 mm BTO	50/pk	AUC298745
7/16" (11 mm) BTO CenterGuide	50/pk	AUC298717
7/16" (11 mm) BTO CenterGuide	100/pk	AUC298718
11.5 mm BTO CenterGuide	50/pk	AUC298777
1/2" (12.7 mm) BTO CenterGuide	50/pk	AUC298727
17 mm BTO	50/pk	AUC298817

### Advanced Green 3™

- True low-bleed, high temperature green septum
- Maximum temperature 400OC

The KONIK Advanced Green 3 Septum was specifically created to combine significantly longer injection life, low bleed and low injection port adhesion. The result is a green septum you can use for all your critical analyses. Advanced Green 3 Septa are packaged in glass vials for high purity. Septa are 3 mm thick.



AUC246225



AUC246424

Description	Qty	Item No.
5 mm AG3 CenterGuide	50/pk	AUC246525
9 mm AG3 CenterGuide	50/pk	AUC246713
3/8" (9.5 mm) AG3	50/pk	AUC246124
7/16" (11 mm) AG3 CenterGuide	50/pk	AUC246225
7/16" (11 mm) AG3 CenterGuide	100/pk	AUC246228
11.5 mm AG3 CenterGuide	50/pk	AUC246725
1/2" (12.7 mm) AG3 CenterGuide	50/pk	AUC246325
17 mm AG3	50/pk	AUC246624



AG3 with CenterGuide

## Premium Septa

### Marathon™ Septa - Excellent Performance with Long Injection Life

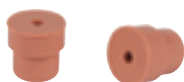
- Outstanding lifetime
- Premium septum for autosamplers
- CenterGuide™ Marathon are pre-pierced for extremely reliable performance
- Up to 400 injections per septum
- Maximum temperature setting 400°C



AUC239698



AUC239297



AUC239488

The KONIK Marathon septum typically achieves 400 injections without failure, when used with a rounded-tip (Agilent-style) needle and autosampler or needle guide. The CenterGuide versions of Marathon are pre-pierced to channel the needle through the same spot with each injection, which helps eliminate the common type of coring that occurs on the first injection. The Marathon septum is also ideal for standard manual-injection GC and GC/MS. Septa are 3 mm thick, except Shimadzu-style plug septa. Septa are packaged in glass jars.

Description	25/pk	50/pk	100/pk
5 mm Marathon	AUC239587	AUC239597	
9 mm Marathon CenterGuide	AUC239778	AUC239779	
3/8" (9.5 mm) Marathon	AUC239188	AUC239198	
7/16" (11 mm) Marathon CenterGuide	AUC239287	AUC239297	AUC239888
11.5 mm Marathon CenterGuide	AUC239787	AUC239798	
1/2" (12.7 mm) Marathon CenterGuide	AUC239387	AUC239397	
17 mm Marathon	AUC239688	AUC239698	

## General-Purpose Septa

### Puresep T™

- The better PTFE coated septum
- Recommended maximum temperature is 225OC

Silicone-based septum is faced on one side with a double layer of polyimide and PTFE. The polyimide adheres to both the silicone and PTFE, providing a better bond and enhanced durability. The outer PTFE coating assures maximum inertness and helps minimize bleed.

Description	Qty	Item No.
1/4" (6.0 mm) Puresep T	50/pk	AUC230665
3/8" (9.5 mm) Puresep T	50/pk	AUC230675
7/16" (11 mm) Puresep T	50/pk	AUC230685
11.5 mm Puresep T	50/pk	AUC230697
1/2" (12.7 mm) Puresep T	50/pk	AUC230695
13 mm Puresep T	50/pk	AUC230698



Puresep T

### Puresep P™

- Made from silicone rubber coated with a layer of high-temperature polyimide
- 3 mm thick

The polyimide layer is stable to 400OC, however the recommended upper limit for the septum as a whole is 300OC, due to the characteristics of silicone.

Description	Qty	Item No.
1/4" (6.0 mm) Puresep P	50/pk	AUC230630
3/8" (9.5 mm) Puresep P	50/pk	AUC230640
7/16" (11 mm) Puresep P	50/pk	AUC230650
11.5 mm Puresep P	50/pk	AUC230670
1/2" (12.7 mm) Puresep P	50/pk	AUC230660



Puresep P

### Ultrasep® R

This is a good general-purpose septum. Ultrasep R has a 45 - 55 durometer hardness rating and is easy to penetrate. The upper temperature limit is 350OC. They have a long injection lifetime at 300OC.

Description	Qty	Item No.
3/8" (9.5 mm) Ultrasep R	50/pk	AUC236905
7/16" (11 mm) Ultrasep R	50/pk	AUC236115
1/2" (12.7 mm) Ultrasep R	50/pk	AUC236125



Ultrasep R

## General-Purpose Septa / Septa Sheets

### Microsep® Septa F-138



Microsep Septa F-138

This is a general-purpose septum recommended for low-temperature use. Microsep Septa F-138 is made of a special silicone rubber formulation with a PTFE backing. It is pre-treated by washing in distilled water, then baking under vacuum at 200OC. Off-white color. The septa stabilize rapidly after installation to minimize septum bleed.

Description	Qty	Item No.
1/4" (6.0 mm) Microsep F-138	50/pk	AUC220625
3/8" (9.5 mm) Microsep F-138	50/pk	AUC220900
0.394" (10 mm) Microsep F-138	50/pk	AUC220100
7/16" (11 mm) Microsep F-138	50/pk	AUC220110
1/2" (12.7 mm) Microsep F-138	50/pk	AUC220120



Microsep Septa F-174

### Microsep Septa F-174

This is a medium-performance silicone septum faced on one side with a layer of PTFE. Thickness is approximately 3 mm. They have lower bleed than the F-138 septa.

Description	Qty	Item No.
3/8" (9.5 mm) Microsep F-174	50/pk	AUC230905
7/16" (11 mm) Microsep F-174	50/pk	AUC230115
1/2" (12.7 mm) Microsep F-174	50/pk	AUC230125



Economy Blue Septa

### Economy Blue Septa

Our Blue Septa are designed for non-demanding, routine applications. They are easy to penetrate, with a durometer rating of 40 - 45. The septa can be used up to 200 - 250OC and are suitable for 90% of all GC analyses. Made from silicone.

Description	Qty	Item No.
1/4" (6.4 mm) Economy Blue Septa	100/pk	AUC234625
3/8" (9.5 mm) Economy Blue Septa	100/pk	AUC234905
7/16" (11 mm) Economy Blue Septa	100/pk	AUC234115
1/2" (12.7 mm) Economy Blue Septa	100/pk	AUC234125



AUC960070

### Microsep F-145 Cylindrical Septa

These can be used with glass columns or any item with a standard cylindrical septum port, such as gas sampling bulbs. Microsep F-138 with a PTFE facing is molded into red silicone, for three-layer protection. Half-depth hole design. Dimensions are approximately 6 x 8 mm.

Description	Qty	Item No.
Cylindrical Septa	12/pk	AUC960070
Cylindrical Septa	50/pk	AUC960270

## Accessories

### Septa Sheets

For those with special size requirements or special applications. Sheets are approximately 11.5" x 11.5" x 1/8" (3 mm).

Description	Qty	Item No.
Economy Blue Septum Sheet	1 sheet	AUC234100
Ultrasep® R Septum Sheet	1 sheet	AUC236100
Puresep TTM Septum Sheet	1 sheet	AUC230696



AUC230696

### Injection Port Cleaning Kit

This is designed for cleaning all GC injection ports, including those in Shimadzu instruments. Included are three stainless steel brushes, 5 mm (for Shimadzu), 1/4" and 3/8", and one scraper for removing septum residue.

Description	Item No.
Injection Port Cleaning Kit	AUC206211



AUC206211

### Septa Pick

The Septa Pick is useful for removing small pieces of septa lodged in the threads and corners of the septum cap or injection port. It can also be used to remove small bits of graphite ferrule from the cap and fittings of column connectors; other small cleaning jobs.

Description	Item No.
Septa Pick	AUC205465



AUC205465

