

VACUUM PUMPS

Rough Vacuum, High Vacuum and Ultra-High Vacuum

- Rotary pumps, single-stage and multi-stage Roots pumps, diaphragm pumps, chemical dry pumps, turbomolecular pumps, ion pumps, TSP, and getter pumps.
- Complete range of KF, ISO and CF flanges and fittings
- Vacuum accessories: traps, filters, vacuum valves, etc.
- Oil & greases, including PFPE fluids.
- Chambers for high vacuum and UHV.
- Motion feedthroughs and electrical feedthroughs.
- Leak detectors.
- Gas & liquid manipulators: MFC, valves and unions, connectors, reducers, etc.
- Vacuum ovens.



VACUUM ACCESSORIES

The Konik group has worked for many years as distributors for some of the best known manufacturers of vacuum equipment. We are pleased to include in this catalogue the most common accessories for our mass spectrometer system, as well as a selection of basic vacuum components. The range of vacuum products that we offer is much greater than can be shown in this catalogue, so please don't hesitate to contact your agent if you are looking for something that isn't shown in these pages.

Oil

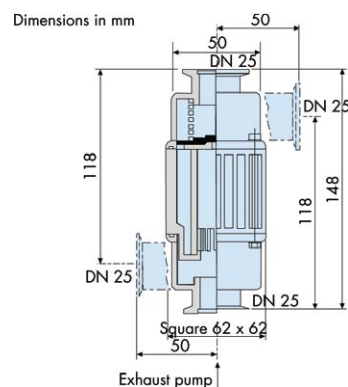
	Type	Vapor pressure	Viscosity	Density	Flash point	Applications
A120	Paraffin based mineral oil	1.3.10-6 mbar at 65°C	118 cst at 40°C 12.5 cst at 100°C	0.886	260°C	general purposes non corrosive gases

Description	Item No
Oil charge for RVP (2 L)	VRA068099

Oil Mist Eliminator

- material: body (polyamide), cartridge (epoxy/glass micro-fiber)
 - weight: 0.217 kg 0.477 lbs
 - inlet port/exhaust port: DN25 ISO-KF
- Orders must be placed for quantities multiple of 5 (5, 10, 15...).
- supplied with: 1 centering ring, 1 clamp, 1 additional angle port

Description	Item No
OME 25S Oil Mist Eliminator	VRA104200
Cartridge Filter	VRA068304



Maintenance kits for rotary vane pump

Model	Major kit	Minor kit	Shaft seal kit
2005 SD	VRA103902	VRA103911	VRA065875

- Minor kit includes all necessary seals (shaft seals, o-rings, valves...).
- Major kit includes Minor kit plus vanes, springs, plugs...
- Shaft seal kit includes all .

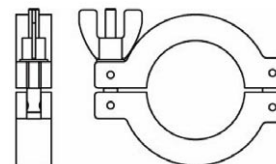


FITTINGS

NW Swing Clamps - Aluminium

Description	Item No
NW10/16	VAKCS16-101
NW20/25	VAKCS25-101
NW32/40	VAKCS40-101
NW50	VAKCS50-101

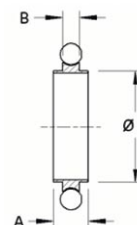
Pressure range 10⁻⁷ mbar to 10 bar. Temperature range -10 to +200°C

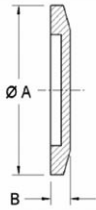


NW Centering Ring. Viton® / Stainless Steel

Description	A	B	C	Item No
NW16	8	3.9	17	VAKCR16-104
NW25	8	3.9	26	VAKCR25-104
NW40	8	3.9	41	VAKCR40-104
NW50	8	3.9	52	VAKCR50-104

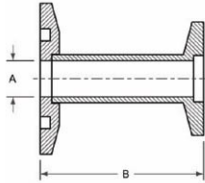
Pressure range 10⁻⁷ mbar to 1 bar. Nitrile rings available on request. Temperature range -10 to +200°C (Sustained 150°C).





NW Blank Flange. Aluminium

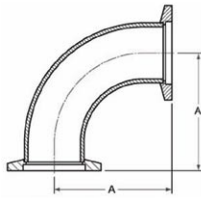
Description	A	B	Item No
NW16	30	6	VAKBFA16-130
NW25	40	6	VAKBFA25-130
NW40	55	6	VAKBFA40-130
NW50	75	6	VAKBFA50-130



NW Reducing Adaptor. Stainless Steel

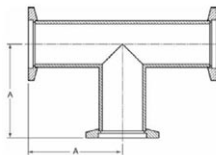
Description	A	B	Item No
NW25/16	20	28	VAKRA2516-138
NW40/16	20	28	VAKRA4016-138
NW40/25	28	28	VAKRA4025-138
NW50/16	20	28	VAKRA5016-138
NW50/25	28	28	VAKRA5025-138
NW50/40	44.5	28	VAKRA5040-138

Special lengths available on request



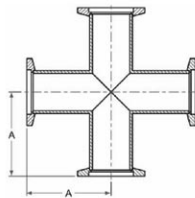
NW Elbow 90°. Aluminium

Description	A	Item No
NW16	40	VAKELB16A-140
NW25	50	VAKELB25A-140
NW40	65	VAKELB40A-140



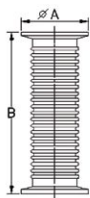
NW T-piece. Aluminium

Description	A	Item No
NW16	80	VAKTEE16A-143
NW25	100	VAKTEE25A-143
NW40	130	VAKTEE40A-143



NW Cross. Aluminium

Description	A	Item No
NW16	40	VAKX16A-146
NW25	50	VAKX25A-146
NW40	65	VAKX40A-146



NW Flexible Hose. Stainless Steel

	Description	Hose ID	A	B	Item No
NW16	NW16	16	30	500	VAKKFF-16-500
	NW16	16	30	750	VAKKFF-16-750
	NW16	16	30	1000	VAKKFF-16-1000
NW25	NW25	25	40	500	VAKKFF-25-500
	NW25	25	40	750	VAKKFF-25-750
	NW25	25	40	1000	VAKKFF-25-1000
NW40	NW40	40	55	500	VAKKFF-40-500
	NW40	40	55	750	VAKKFF-40-750
	NW40	40	55	1000	VAKKFF-40-1000
NW50	NW50	50	75	500	VAKKFF-50-500
	NW50	50	75	750	VAKKFF-50-750
	NW50	50	75	1000	VAKKFF-50-1000

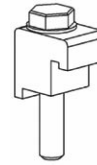
ISO Double Claw Clamps. Stainless Steel

Description	A	Item No
ISO63 to 250	M10	VAKDC63/250



ISO Single Claw Clamps. Stainless Steel

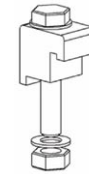
Description	A	Item No
ISO63 to 100	M8	VAKWC63/100
ISO160 to 250	M10	VAKWC160/250



Used with blind tapped holes & centring ring.

ISO Single Claw Clamp, Nut & Washer. Stainless Steel

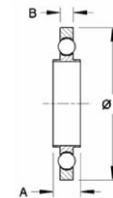
Description	A	B	C	Item No
ISO63 to 160	22.5	M8	45	VAKWCN63/100
ISO160 to 250	23	M10	50	VAKWCN160/250



Used with through bolt holes & centring ring.

ISO Trapped Centering Ring. Viton. Stainless Steel

Description	A	B	C	Item No
ISO63	8	3.9	94	VAKTCR63
ISO100	8	3.9	128	VAKTCR100
ISO160	8	3.9	179	VAKTCR160

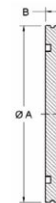


Additional sizes available on request.

NOTE: Aluminium Outer.

ISO-K Blank Claw Clamp Flange

Description	A	B	C	D	Item No
ISO63	95	90	12	70	VAKBF63
ISO100	130	125	12	102	VAKBF100
ISO160	180	175	12	153	VAKBF160



ISO-F Bolted Blank Flange

Description	A	B	C	D	Item No
ISO63	130	110	12	Ø9x4	VAKBFB63
ISO100	165	145	12	Ø9x8	VAKBFB100
ISO160	225	200	16	Ø11x8	VAKBFB160

